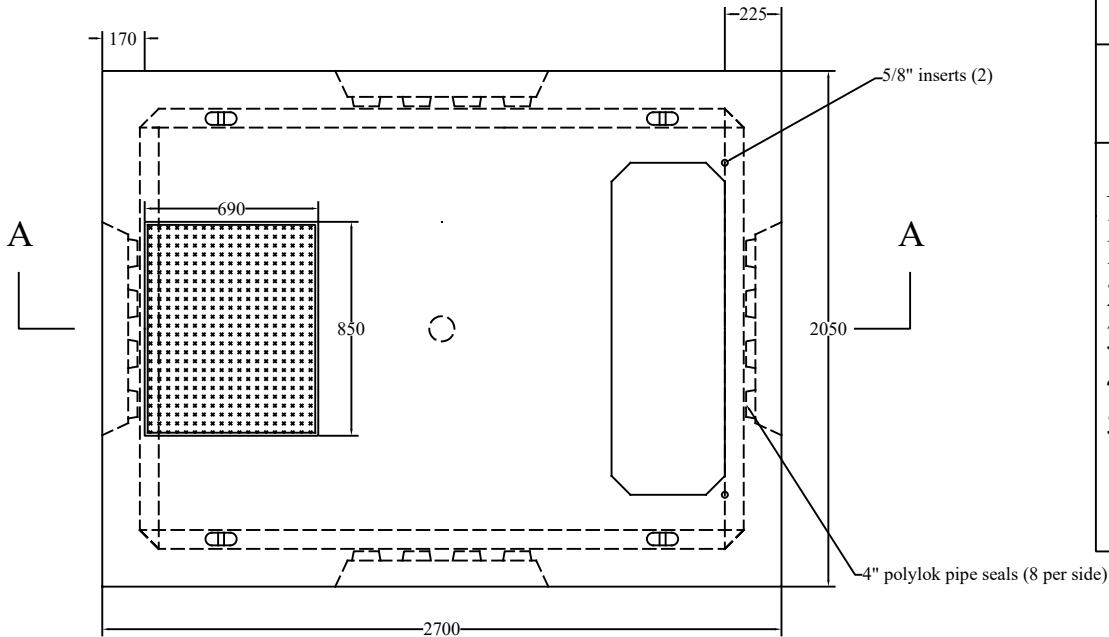


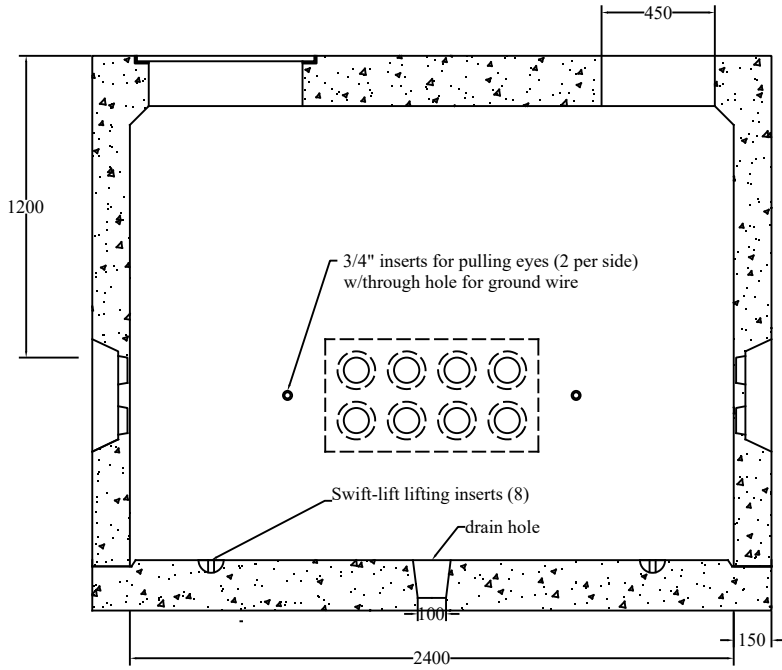
# LPC108 - Transformer Base Guelph Hydro

Acton Precast Concrete Limited

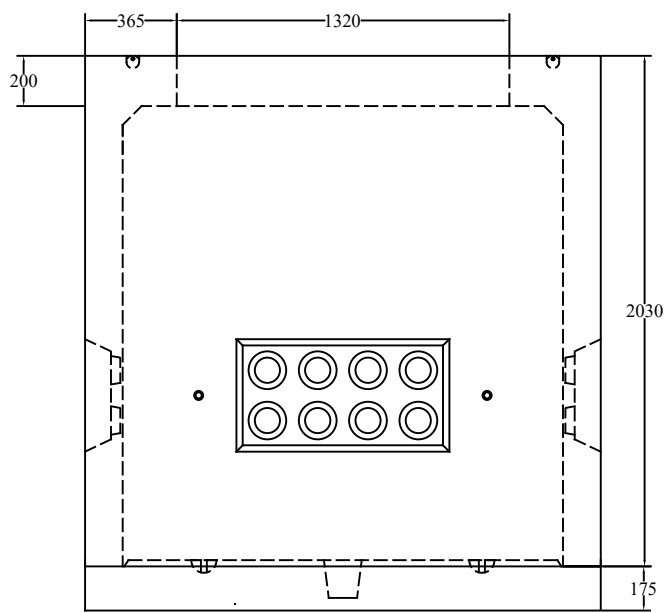
- Notes:
1. Concrete: 50mpa air 5-7%
  2. Reinforcing: Grade 400w
  3. Finish: Steel form smooth
  4. Weight: 9750 kgs
  5. All dimensions in mm



Top View



Section A-A



End View