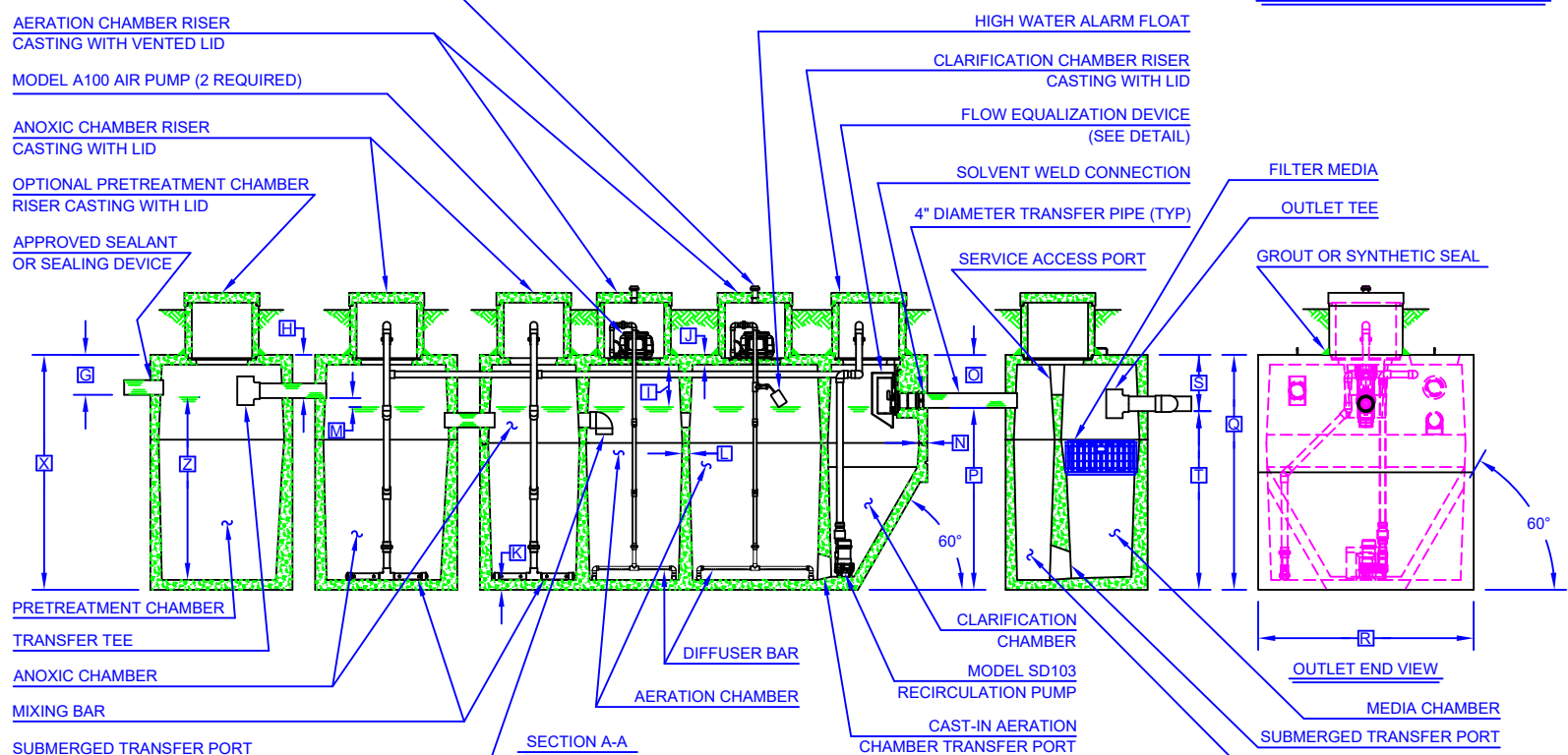


- GENERAL NOTES:**
- FALL THROUGH THE HYDRO-KINETIC® PLANT FROM INLET INVERT TO OUTLET INVERT IS FIVE INCHES. INLET INVERT IS TWELVE INCHES BELOW TANK TOP.
 - ON DEEPER INSTALLATIONS, PRECAST RISERS MUST BE USED TO EXTEND CASTINGS TO GRADE. INSPECTION COVERS MUST BE DEVELOPED TO WITHIN TWELVE INCHES OF GRADE.
 - TANK REINFORCED PER ACI STD. 318.
 - REMOVABLE COVERS ON RISERS WEIGH IN EXCESS OF SEVENTY-FIVE POUNDS EACH TO PREVENT UNAUTHORIZED ACCESS.
 - CONTACT THE LOCAL, LICENSED HYDRO-KINETIC® DISTRIBUTOR FOR ELECTRICAL REQUIREMENTS.



NOTE: PRETREATMENT CHAMBER MINIMUM REQUIREMENTS SHALL BE: 650 GALLONS CAPACITY, 9.5 GALLONS PER INCH OF LIQUID LEVEL AND 9 INCHES OF FREEBOARD.

NOTE: EXTERNAL ANOXIC CHAMBER MINIMUM REQUIREMENTS SHALL BE: 300 GALLONS CAPACITY, 4.5 GALLONS PER INCH OF LIQUID LEVEL AND 12 INCHES OF FREEBOARD.

NOTE: TOTAL SYSTEM CAPACITY: 3,050 GALLONS RATED CAPACITY: 1,000 GALLONS PER DAY

PROJECT ENGINEER'S APPROVAL:
 I (WE) HEREBY CERTIFY THAT THIS DRAWING HAS BEEN CHECKED AND IS APPROVED FOR USE IN CONFORMITY WITH THE CONTRACT DOCUMENTS.

DATE: _____
 NAME: _____

CONTRACTOR'S CERTIFICATION:
 I (WE) HEREBY CERTIFY THAT THIS DRAWING HAS BEEN CHECKED AND IS APPROVED FOR USE IN CONFORMITY WITH THE CONTRACT DOCUMENTS.

DATE: _____
 NAME: _____

CRITICAL DIMENSIONS

A	1'-0"	N	0'-2 1/2"
B	2'-4"	O	1'-4"
C	2'-5 1/2"	P	4'-8"
D	3'-4 1/2"	Q	6'-0"
E	2'-4"	R	5'-6"
F	11'-5"	S	1'-5"
G	1'-0"	T	4'-7"
H	1'-1"	U	3'-7 1/2"
I	1'-1"	V	
J	0'-3"	W	
K	0'-3"	X	
L	0'-2"	Y	
M	0'-3"	Z	

U.S. AND FOREIGN PATENTS PENDING

norweco

HYDRO-KINETIC® MODEL 1000 FEU WASTEWATER TREATMENT SYSTEM

APPROVED BY: JMM
 VPE
 DATE: 9-18-13
 SCALE: NTS

© MMXIII
 PC-5-1027